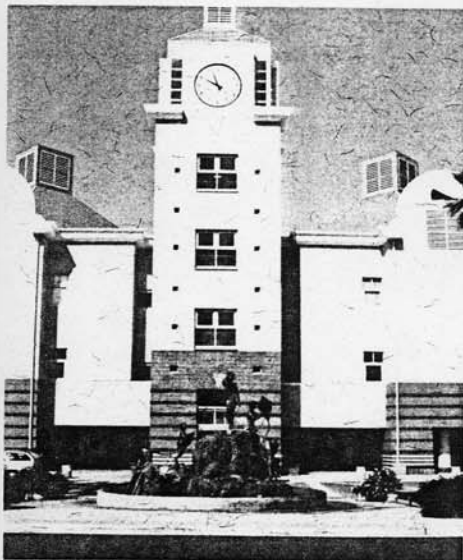


A Visit with Jean Stonerook,
Facilities Planner

CHILDREN'S HOSPITAL
AND HEALTH CENTER

Approaching Children's Hospital and Health Center from the 805 Freeway is like visiting the toy house on the hill. The new Patient Care Wing, completed and occupied this year, exudes a playful atmosphere in the distance, with its colorful towers, bold-faced clock, and ornately detailed parking garage. Topiary giraffes guard the entrance to the Emergency Unit. Stuffed yellow "cactus" peak at you from the windows and children fly kites in the fountain. A kid's kind of place, to be sure.



Children's Hospital's new colorful towers and playful fountain.

Back in Module 6, however, the business of creating and maintaining child-friendly and health-giving spaces offers adult challenges to IFMA member, Jean Stonerook, and her colleagues. The Facilities Planning and



Topiary giraffes guard the entrance to the Emergency Unit.

Development group, led by Vice President Paul Hagen, includes Jean, who handles Space Planning and Interior Design, two in-house architects, Director of Engineering, and a Project Assistant. The new hospital is only one of numerous buildings on the main campus. Along with satellite locations and recent acquisitions, the hospital's facilities total around 800,000 square feet. That's lots of space for little feet!

Jean explains their methods, "We generally share responsibility with at least one other person in the department on a given project. I may be project manager, with an architect assisting on detailing, or the architect is managing a project for which I provide interiors work. Current projects include remodels of space vacated by departments that have relocated to the new wing, a new Radiology Department, and a new Rehabilitation Unit.

Jean came to Children's Hospital 8 1/2 years ago well prepared for planning medical facilities. After completing a Bachelor's Degree in Interior Design at Iowa State, work experience included 4 years with Herman Miller in Zeeland, Michigan, as a space planner for their Laboratory and Health Care systems products. She also designed laboratories for Earl Walls Associates, a specialist in that area. Of the recent building project, Jean says, "Our most memorable experience had to be with the helipad! LifeFlight changed to a new, heavier helicopter after construction began, requiring added structural steel during construction. As IFMA members will appreciate, this was not a "minor" glitch.

Overall, however, the project has been immensely successful. Jean credits an internal Move Committee for much of this

success, "The committee, made up of representatives from key departments, and led by a staff analyst, met for months prior to the move. Individual units were brought on-line and occupied sequentially over a period of weeks."

Today, the Patient Care Wing is fully-occupied, but Children's Hospital is still working on a particularly frustrating project. It seems that the bronze statue in the fountain (those adorable children flying kites) is turning green, despite the efforts of professionals to coat it with an inhibiting over-coat. While bronze would be allowed to take on its natural "verdigris" patina in many outdoor installations, the management at Children's Hospital is understandably unhappy with "children turning green"! If you have any experience that would help solve this problem, please contact Jean (576-5979).

Thanks to Jean Stonerook for giving her time for this interview and for continuing as a Professional Member of IFMA/ San Diego.

Pamela Warr



Jean Stonerook, helping make Children's Hospital work for kids.

SAN DIEGO NEWSLINE

is a quarterly publication of the
San Diego Chapter of IFMA.

Please direct all submissions to:

NEWSLINE

Tom Fincher
5525 Morehouse Drive
San Diego, CA 92121
FAX 619-450-7394